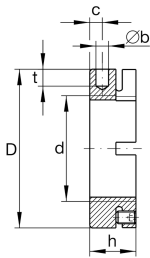
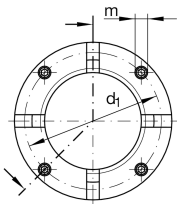
**AM17** **Precision locknut**

Precision locknuts AM, segments for clamping

Technical information**Main Dimensions & Performance Data**

d	M17X1	Thread
D	32 mm	Outside diameter
h	18 mm	Height
F _{aB}	120.000 N	Breaking load, axial
M _L	25 Nm	Breakawag
M _{AL}	15 Nm	Mounting torque reference
M _m	0,11 kg*cm ²	Mass moment of inertia
≈m	60,46 g	Weight

Mounting dimensions

M _m	3 Nm	Mounting torque set screw
----------------	------	---------------------------

Dimensions

b	4 mm	Bore diameter blind hole
t	5 mm	Depth blind hole
d ₁	26 mm	Pitch circle diameter 1 (holes)
c	5 mm	Distance bore
m	M5	Threaded - threaded pin
	H11	Bore diameter blind hole housing fit